

# Energy AnalytiX<sup>®</sup>

Advanced Energy Management Software



Make the Invisible Visible™

# Analytics for Energy Smart Buildings

Energy AnalytiX  
can help save  
between 5% and  
25% annually on  
utility bills

In today's competitive global economy with volatile energy prices and increasing environmental regulations, profitability and the ability to quickly analyze and closely control operating costs is critical. Every business and organization is looking for ways to reduce consumption, monitor conditions, lower energy costs, and minimize carbon emissions. A smart, integrated energy management solution can efficiently save money and translate into a greatly improved bottom line.

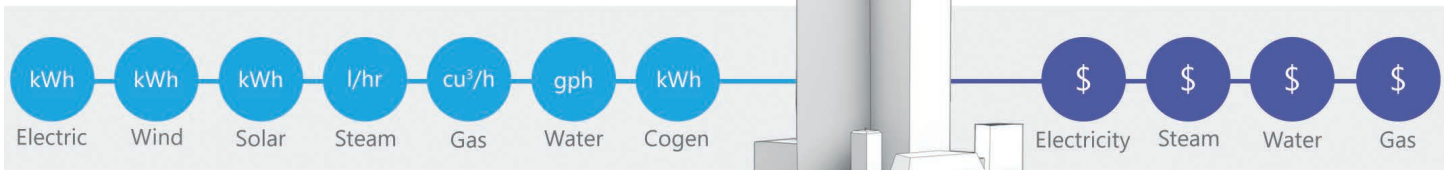
Energy AnalytiX® provides open universal data connectivity and enterprise integration to a wide variety of BMS, SCADA, ERP, and control systems. Managers of commercial or government buildings, university campuses, and industrial plants have a revolutionary smart energy software solution that is intuitive to configure, customize, and operate.

Energy AnalytiX includes built-in calculations, KPIs, analytics, data historian, reporting, and the rich visualization needed to take decisive action to reduce and manage utility costs and consumption.

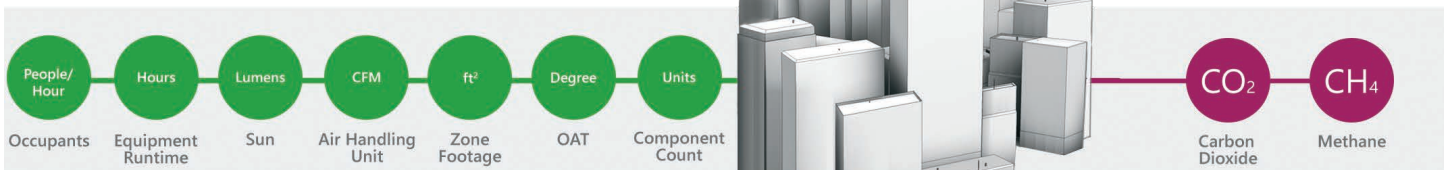
- Quickly deploy to **achieve ROI**
- **Realize cost savings** through informed decisions
- Ready-to-use cost, consumption, and carbon **dashboards**
- **Drill down** into causes of abnormal energy use
- **Scale** from a single building to an entire campus or city

## Energy Management

### Consumption



### Conditions





# Optimize Operations to Cut Costs



## Rich Visualization Dashboards on Any Glass

Energy Analytix delivers rich platform and browser-independent, real-time visualization on-premises, over a web browser, or on a mobile device, unlocking access to a single building or global operation. Secure, firewall-friendly, prebuilt, and customizable dashboards deliver energy reports that analyze energy consumption patterns. Facility managers, building engineers, or maintenance personnel can intuitively navigate and actively identify opportunities for improvement.



## Intuitive Configuration and Runtime

Energy Analytix employs intuitive configuration capabilities, including asset management that provides setup and configuration to any level of aggregation. Drill down to specific sources of energy inefficiencies and locate suspected consumption offenders. Easily normalize energy metrics by environmental factors or other variables, such as occupancy and OAT, so that data is comparative and meaningful.



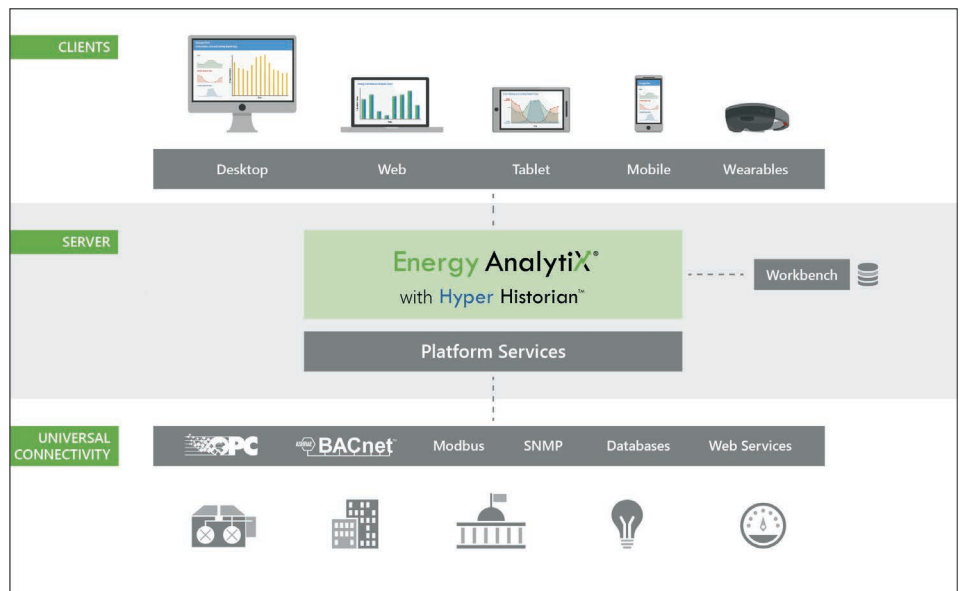
## IoT and Energy Smart Buildings

ICONICS is leading the way in cloud-based solutions with its building automation, energy management, analytics, and mobile applications to help customers embrace the Internet of Things (IoT). Facility directors and energy managers now have a great tool at their disposal to quickly deploy applications. ICONICS IoTWorX™ communicates with Microsoft Azure or third-party applications by publishing on-premises data to the cloud via secure transport protocols. IoT edge devices are cost effective and simple to deploy with remote management, provisioning, and configuration. ICONICS visualization, analytics, and mobile solutions then subscribe to and consume the data, enabling customers to easily create energy efficient applications.

## Actionable Information at Your Fingertips

Based on scalable web technologies, Energy AnalytiX connects, analyzes, collects, and visualizes information in a way that is intuitive and easily accessible. A wide variety of ready-to-use dashboards provide instant information on energy consumption, financials, and the environmental impact. Compare and visualize energy costs and the associated financial impact.

The standards-based ISA-95 Asset Navigator allows for rapid and simple navigation of summarized reports and charts. Alerts and an extensive alarm management system provide instant notifications via SMS text messaging and email, while continuing to deliver rich, browser-independent visualization to phones, tablets, and other mobile devices.



## Open Standard Connectivity

Innovative universal data integration, based on industry open standards such as OPC UA, BACnet, SNMP, Modbus, and web services, manages energy consumption, costs, and carbon by using the Energy AnalytiX solution.

## Benefits

- Scale from a single building to an entire campus or portfolio
- Connect universally with OPC, BACnet, SNMP, and web services
- Visualize energy management and consumption
- Leverage standard and custom calculations such as:
  - \$/Ft<sup>2</sup>
  - Humidity
  - Avg. kWh/Degree Days
  - €/m<sup>2</sup>
  - Total CF Air/Zone
  - kWh/Occupant/Hour
  - CO<sub>2</sub>/Meter
  - CO<sub>2</sub>/Person
- Integrate and interact with historical data
- Unified time synchronization across locations with UTC support
- Achieve rapid insight with intuitive drill-down capabilities
- Meet and exceed government and LEED regulations
- Reduce engineering time with preconfigured dashboards
- Integrate with existing meter types
- Compare relevant metrics with Degree Days Analysis

## Applications

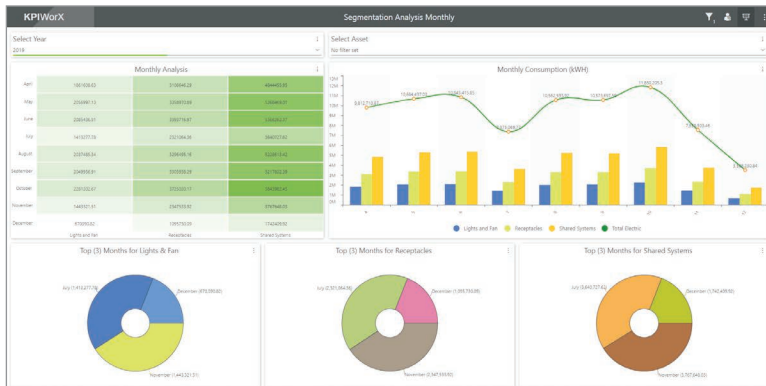
- Building Controls and HVAC
- Commercial and Retail Locations
- Data Centers
- Lighting Zones
- Manufacturing Facilities
- Municipal Utility Stations
- Oil and Gas Facilities
- Pharmaceutical Facilities
- Shipping and Packaging Facilities
- Smart Cities
- Solar Energy Facilities
- Temperature Control and Ventilation
- Universities and Academic Campuses
- Water and Wastewater Facilities
- Wind Energy Facilities





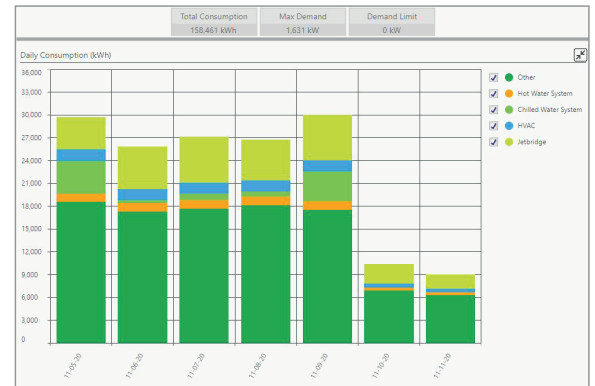
# Real-time Operational Efficiency

## Monitor Building Performance



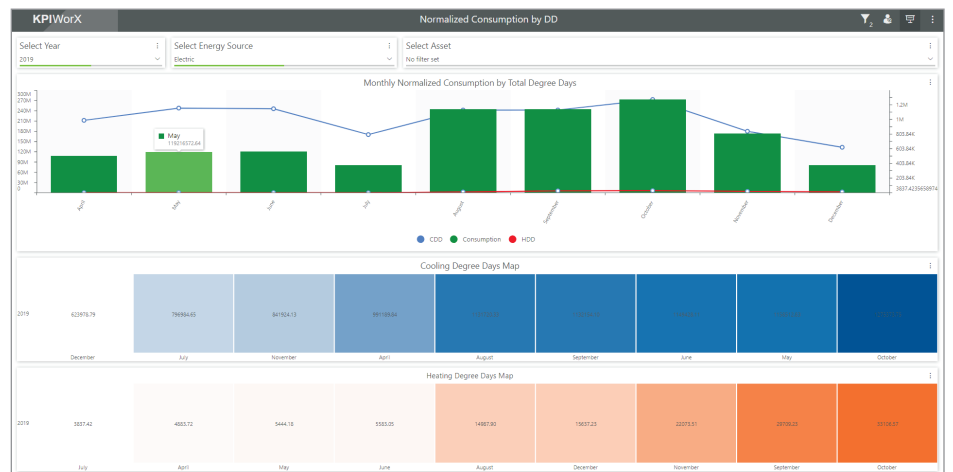
Load Segmentation Analysis

## Identify Usage Patterns



Daily Consumption Trend

## Correlate Weather Data



Degree Days Analysis

Intuitive charts to identify savings opportunities



Founded in 1986, ICONICS is an award-winning independent software provider offering real-time visualization, HMI/SCADA, energy management, fault detection, manufacturing intelligence, MES, and a suite of analytics solutions for operational excellence. ICONICS solutions are installed in 70 percent of the Global 500 companies around the world, helping customers to be more profitable, agile and efficient, to improve quality, and to be more sustainable.

ICONICS is leading the way in cloud-based solutions with its HMI/SCADA, analytics, mobile and data historian to help its customers embrace the Internet of Things (IoT). ICONICS products are used in manufacturing, building automation, oil and gas, renewable energy, utilities, water and wastewater, pharmaceuticals, automotive, and many other industries. ICONICS' advanced visualization, productivity, and sustainability solutions are built on its flagship products: GENESIS64™ HMI/SCADA, Hyper Historian™ plant historian, AnalytiX® solution suite, and MobileHMI™ mobile apps. Delivering information anytime, anywhere, ICONICS' solutions scale from the smallest standalone embedded projects to the largest enterprise applications.

ICONICS promotes an international culture of innovation, creativity, and excellence in product design, development, technical support, training, sales, and consulting services for end users, systems integrators, OEMs, and channel partners. ICONICS has over 375,000 applications installed in multiple industries worldwide.

## ICONICS Sales Offices



### World Headquarters

100 Foxborough Blvd.  
Foxborough, MA, USA, 02035  
+1 508 543 8600  
us@iconics.com



### European Headquarters

Netherlands  
+31 252 228 588  
holland@iconics.com

### Australia

+61 2 9605 1333  
australia@iconics.com

### China

+86 10 8494 2570  
china@iconics.com

### Czech Republic

+420 377 183 420  
czech@iconics.com

### France

+33 4 50 19 11 80  
france@iconics.com

### Germany

+49 2241 16 508 0  
germany@iconics.com

### India

+91 265 6700821  
india@iconics.com

### Italy

+39 010 46 0626  
italy@iconics.com

### Singapore

+65 6667 8295  
singapore@iconics.com

### UK

+44 1384 246 700  
uk@iconics.com



For more, visit [iconics.com](http://iconics.com)

© 2020 ICONICS, Inc. All rights reserved. Specifications are subject to change without notice. AnalytiX and its respective modules are registered trademarks of ICONICS, Inc. GENESIS64, GENESIS32, Hyper Historian, BizViz, PortalWorX, MobileHMI and their respective modules, OPC-to-the-Core, and Visualize Your Enterprise are trademarks of ICONICS, Inc. Other product and company names mentioned herein may be trademarks of their respective owners.

Gold  
**Microsoft Partner**  
Six-time Partner of the Year Winner

