



Hong Kong Harbor



Customer Success Story

## Hong Kong Marine Department Kowloon, China



Harbor Overview Map at Hong Kong Marine Dept.

### About The Hong Kong Marine Department

The Vessel Traffic Centre of Hong Kong Marine Department monitors and regulates all ship movements within Hong Kong waters. Over one thousand big and small ships enter into or sail from the port of Hong Kong daily. The volume of traffic that transits Hong Kong waters to and from the ports at the Pearl River Delta increases annually. At any one time, there are over three hundred ships moored within the harbor.

The Maritime Rescue Coordination Centre, which is also under Hong Kong Marine Department, is responsible for coordinating all search and rescue operations within the Hong Kong maritime rescue responsible area, which is about the entire northern part of the South China Sea, up to the west coast of the Philippines on the east and up to the 10 degree Latitude on the south.

*“The critical requirements of monitoring and guiding the vessels in the harbor was causing immense pressure on the operators, 24 hours a day, along with the increasing traffic. We needed an accurate and reliable system to assist the operators.*

*The implementation of the ICONICS GENESIS32 software, with its Web capabilities, enabled us to install the communication system with ease and offers us the ability to use and maintain the system with a high degree of reliability, with our qualified staff. The enhanced graphics, data logging and automatic report generation were essential requirements that met our design criteria fully.”*

### Hong Kong Marine Department

The traffic monitoring equipment and the telecommunications equipment of both centers have recently been upgraded. ICONICS GENESIS32 monitoring software is being installed to control and monitor the performance and conditions of the newly installed radars and telecommunications equipment which are situated on remote islands and locations.

### ICONICS Software Deployed

Hong Kong Marine Department selected ICONICS GENESIS32™ Web-enabled, OPC-integrated HMI/SCADA Software suite with AlarmWorX™32, TrendWorX™32, and GraphWorX™32 modules, along with WebHMI

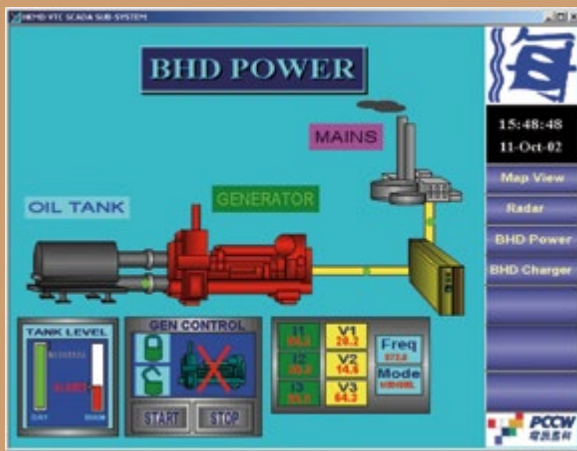
and OPC Server products. Communication and data collection was a very important factor in working with the vast network of communication towers, radar units and remote terminal units.

**Key Features**

The complete turnkey solution that included microwave link, VHF communication equipment, radar Unit, RTU and ICONICS software, was installed by PCCW Ltd. The geography of Hong Kong required the installation of 18 remote sites spread over 7 islands. ICONICS GENESIS32 software enabled rapid development and easy deployment using its modular architecture, aliases, ActiveX

immediate fix. Live CCTV cameras are also linked within the ICONICS GENESIS32 software, which are located at all the various sites. Product stability and reliability were emphasized in the design and implementation of the project. ICONICS GENESIS32 connects 21 OmniFlex 1000 RTUs spread out over 6 islands of Hong Kong.

The senior management of Hong Kong Marine Department can now monitor and control the status of the complete communication system from any remote site. GENESIS32 proved to be a very cost effective solution, which met every aspect of the end users design requirements.



*Generator System Display at the Hong Kong Marine Department*



*Harbor Radar Control*

controls and direct publishing feature of HTML pages over the Internet. The communication towers are built on the various remote islands and locations to collect data about the presence and movement of ships within Hong Kong waters. Communication with these remote sites is critical in terms of keeping the port safe.

**Project Summary**

The project was to monitor the status of the Communication Towers. It was also required to maintain constant communication with all the remote towers, monitor the temperatures of all the communication equipment and immediately notify technical staff of any alarm indications to deploy an

**Conclusion**

ICONICS has worked closely with Hong Kong Marine Department to make the newly installed vessel traffic management system successful in every aspect. Hong Kong Marine Department has also participated in the ICONICS End-user Support and Maintenance program so that it can access technical support personnel and receive software updates as needed.

©2012 ICONICS, Inc. All rights reserved. Specifications are subject to change without notice. AnalytiX and its respective components are registered trademarks of ICONICS, Inc. GENESIS64, Hyper Historian, AnalytiX, GENESIS32, Pocket GENESIS, BizViz and their respective modules, OPC-To-The-Core, and Visualize Your Enterprise are trademarks of ICONICS Inc. Other product and company names mentioned herein may be trademarks of their respective owners. ICO-CSS-012