



Merrill Lynch Complex
Hopewell, New Jersey



Customer Success Story

Merrill Lynch Hopewell, NJ



Floor Plan of One of the Merrill Lynch Buildings

About Merrill Lynch

Merrill Lynch is a world-recognized financial management and advisory company, with offices in 37 countries. As an investment bank, Merrill Lynch is a global underwriter of debt and equity securities and strategic advisor to corporations, governments, institutions and individuals worldwide. Merrill Lynch required a monitor and control solution at the time for their building campus in Hopewell, New Jersey.

ICONICS Software Deployed

Merrill Lynch selected ICONICS GENESIS32™ Web-enabled, OPC-integrated HMI/SCADA suite featuring the GraphWorX™32 HMI Graphical Display Package, AlarmWorX™32 Alarm Management System and TrendWorX™32 Live and Historical Data Logging, Charting and Reporting components

Project Summary

An OEM version of GENESIS32 provides the Energy Smart Buildings for the Merrill Lynch complex in Hopewell, NJ. There are twelve buildings under the watchful eye of state-of-the-art graphics and alarming.

These ice plants are used as a cost-efficient method for building energy management. They are designed to freeze water at night when electricity is available at a low price. Then, when rates go up during the day, the ice is melted to cool down the buildings, rather than using other methods requiring “instant” energy demand. This “time shifting” of energy usage really helps trim the energy bill.

Operators easily navigate among the various systems used to manage every aspect of the building complex (HVAC, Lighting, Energy, Security, Fire, and other Energy Smart Buildings) via the graphics created for the project. There are over 1,000 screens deployed on the project, all of which are accessible with just a few clicks from the menus and control panels designed into the building management system.

Top-notch 3D images representing the equipment used by the project were completed for this application. The project not only offers stunning visual displays, but also follows a Web-motif, making it easy for users to navigate through the system.

Feedback from the users of the system was very positive. They enjoyed the “realism” of the systems’ representation in the graphics. Clicking on floor plans and viewing live status information provides the easy-to-understand operations they were hoping for.

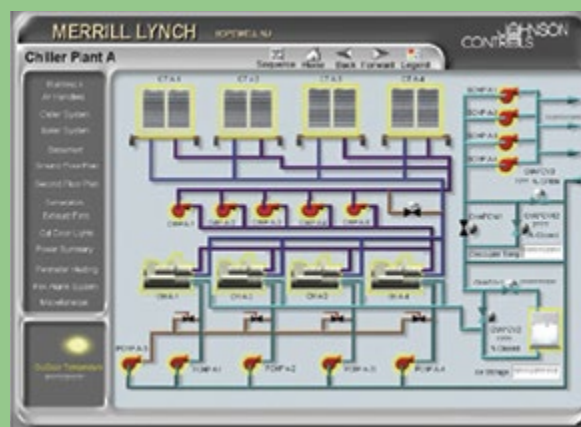
The graphics also make use of the ICONICS “animators”, showing dampers opening/closing, fan blades turning, airflow direction and more.

Conclusion

GraphWorX32 played a critical role in providing a comfortable and safe environment for the people at the Merrill Lynch office complex.



Fan Coil Unit Control in a Merrill Lynch Building



Chiller Plant Controls

Case Study Details



Some unique features of this project include:

- 8 office buildings totaling 1,598,400 Square Feet
- 4 assembly buildings featuring four cafeterias totaling 246,000 Square Feet
- GUI Personalization by User/User Type
- 4 parking garages with a total of 2,594 parking spaces
- Four boiler plants, chiller plants and ice plants

Solutions Highlighted



GraphWorX32

HMI Graphical Display Package

AlarmWorX

Multimedia OPC Alarm Management Software

TrendWorX

Data Logging, Charting and Reporting Software