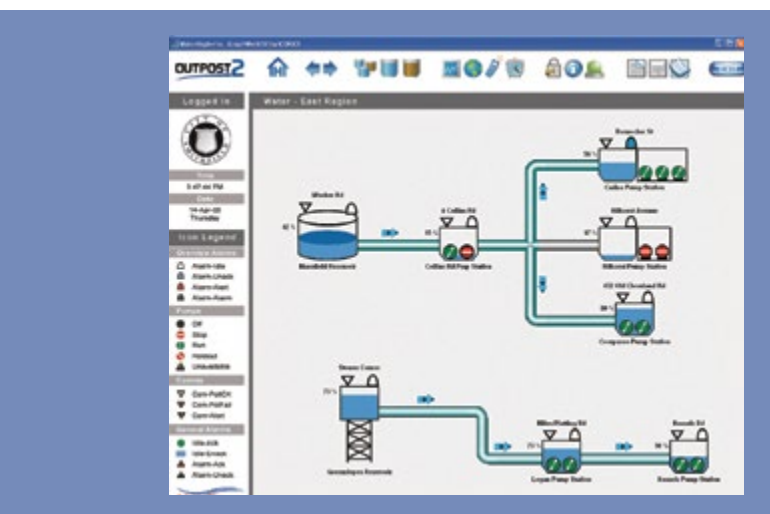


Typical 2-Pump Station Example in MultiTrode's Outpost 2



Customer Success Story

MultiTrode Queensland, Australia/Boca Raton, FL



Hydraulic Overview Screen Example

“GENESIS32 from ICONICS provides ease of use and open connectivity and allows us to produce a robust Outpost 2 SCADA system for our water/wastewater customers.”

Steve Carson
Vice President of Marketing
MultiTrode

ICONICS Software Deployed

Outpost 2 is built on a proven platform, the GENESIS32™ OPC Web-enabled HMI/SCADA suite from ICONICS.

Project Summary

The MultiTrode SCADA product range has been designed specifically for the needs of water and wastewater networks, and includes:

- **SCADA** - the graphical interface, alarming & trending
- **Historian** - the datastore and reporting interface
- **MTU** - the master telemetry unit, which communicates with the field hardware
- **RTU** - the remote telemetry units, or field hardware

About MultiTrode

MultiTrode are “innovators in pump station management systems, municipal SCADA and level sensing”. The ISO9001 company designs and manufactures pump station controllers, RTUs, liquid level sensors, SCADA software and Web-based monitoring and control. MultiTrode has remained dedicated to providing technically advanced, yet simple to use, solutions to municipal water and wastewater authorities around the world for over twenty years.

MultiTrode's Outpost 2 product is an open and powerful SCADA system designed for the water/wastewater industry. Outpost 2 interfaces directly to MultiTrode pump controllers and RTUs and provides a wealth of valuable information from every site.

Some water and wastewater applications that benefit from visualization, monitoring, reporting and analysis solutions include:

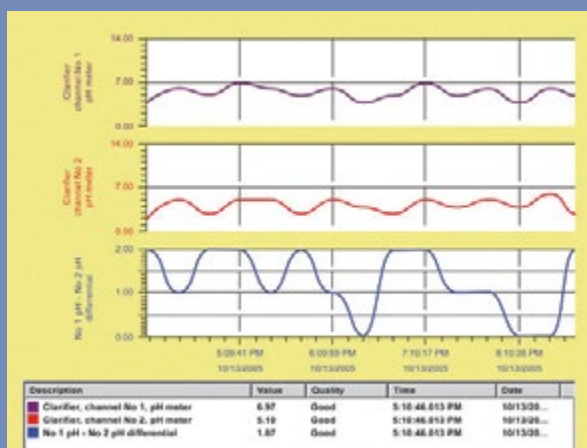
- Water Utilities, Municipalities, Distribution Systems
- Sanitation Systems
- Water Filtration and Remediation, and More.

Benefits of the System

SCADA systems usually consist of graphic screens (the HMI [human machine interface]), trends, alarms and reporting and GENESIS32 is no exception. The Outpost 2 system demonstrates a lot of the basic capabilities of GENESIS32. More advanced users may

Customers can also benefit from additional ICONICS modules for:

- PDAs (via PocketGENESIS™)
- Mobile Phones (via MobileHMI™)
- Advanced Reporting (via ReportWorX™)
- Web-based Organization Portals (via PortalWorX™)
- Visual OEE/KPIs/Analysis (via BizViz™ Productivity Analytics)



Sample Trend Screen

Add Site

Site Information

Site Id: 11
 Site Address: Swath St
 Site Name: SFS11
 Site File Name: TwoPumpStation_MSM

(Site File Name should only be modified if a customized version of the display is required)

Alarm Auto Configuration

Update Alarm Configuration

Alarm Server Config File: ..\config\MSM-3PC.csv
 Alarm Server Data Source:

Trend Auto Configuration

Update Trend Configuration

Trend Server Config File: ..\config\MSM-3PC.csv
 Trend Server Data Source:

OK Cancel

Add Site Screen

appreciate multiple other features of GENESIS32 such as drag and drop ActiveX controls for trends and alarms. Users can go into configuration mode, drag an alarm ActiveX onto a page and go back into run-time mode in a few seconds. The same can be done with trend screens.

Data points on a screen can be simply dragged onto a trends window to instantly start trending. Alternatively, users can browse through OPC tags and select the ones that are required. Historical tags can be selected just as easily. And all this can be done while the SCADA system is running.

Case Study Details

The MultiTrode/ICONICS SCADA product range achieves three key objectives:

- **Low Lifetime Cost** - a system which a typical organization can operate and expand
- **Low Operational Cost** - provides a system which reduces operational and engineering costs by minimizing the need for site visits while improving asset performance
- **Open Systems and Protocols** - the organization can choose to use whatever products they like from MultiTrode, as well as products from other suppliers