

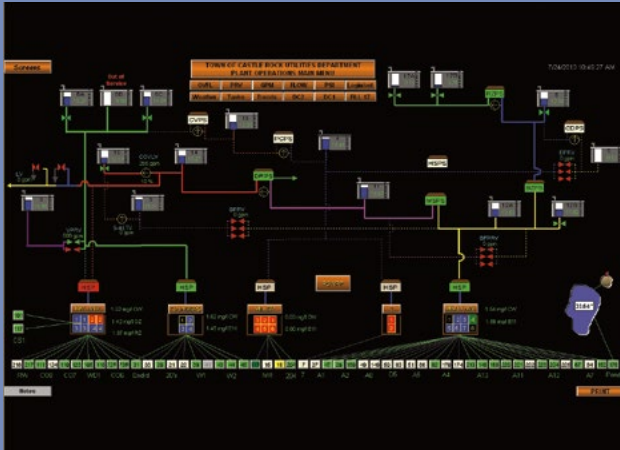


Town of Castle Rock, CO



Customer Success Story

Town of Castle Rock Castle Rock, CO



Plant Operations Main Menu

About Town of Castle Rock

Castle Rock is one of the fastest growing towns in the nation with about 50,000 residents over a mountainous, high desert in a thirty-three square mile area. Receiving its name from the towering plateau overlooking the city, Castle Rock sits on the Colorado Front Range foothills and was first founded during the gold rush of the 1860's.

Castle Rock Water is a public utility, producing high quality drinking water complete with five major water treatment plants throughout the Town of Castle Rock, generating approximately 16MGD during the high demand of the summer months. With this in mind, Castle Rock Water was on the lookout for an HMI/SCADA software management solution that would reduce engineering time and cost, as well as improve overall manageability.

"Without ICONICS, there is no way possible we could operate our system and provide high quality drinking water with the accuracy we demand."

ICONICS Software Deployed

With these goals defined, Castle Rock Water went on to implement ICONICS' GENESIS32™ Web-enabled, OPC-integrated HMI/SCADA suite, as well as WebHMI™ Web-based real-time automation, ReportWorX™ enterprise reporting, charting and analysis and TrendWorX™ real-time trending, historical data logging and analysis software. ReportWorX is essential as it reads archived data and provides Castle Rock Water with daily and monthly operations information, while TrendWorX is used to archive trend data to the SQL database.

Castle Rock Water's second highest cost is power. One of the major KPIs they monitor over SCADA is power consumption. Castle Rock Water installed power monitoring devices to allow them the option of monitoring power demand on their deep well pumps. This gave the engineering staff a baseline to give the operations staff the tools to make the necessary changes in pumping operations through SCADA to maximize production while minimizing cost per gallon pumped. To help accomplish these goals, the Town of Castle Rock also uses Microsoft Windows, Office and SQL Server.

Project Summary

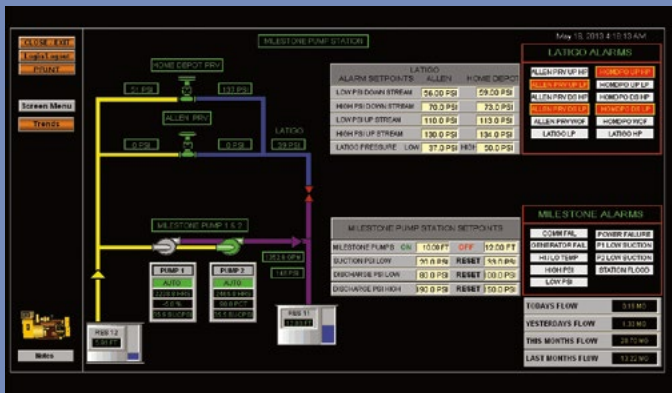
The whole project centers around 27 remote well sites consisting of 66 deep wells, eight pumping stations, five automated PRVs within the distribution system and 16 storage tanks capable of 36 million gallons of storage. Castle Rock Water also has seven sewage lift stations within the main system that pump wastewater to a COOP wastewater treatment facility.

A key component of this project is that, with over 66 remote locations, Castle Rock needed a way to have all the data sync and show up in real time at a central data center. Now, reports are sent to the main data concen-

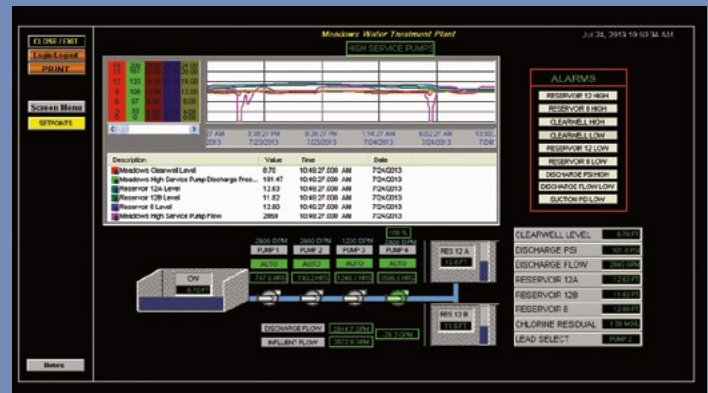
only complete the project earlier than anticipated, but gave them more time to customize features to fit the Town of Castle Rock’s precise needs.

Conclusion

Castle Rock Water chose ICONICS because of the ease of use of the application, the outstanding customer service they received from PCD and the superior support received from local companies such as RSI Company and Wunderlich-Malec Engineering. Thanks to ICONICS, the Town of Castle Rock, in conjunction with Castle Rock Water, is functioning better than ever before with a significant decrease in power usage to boot.



Milestone Pump Station Monitoring



Meadows Water Treatment Plant

trator at headquarters, providing irreplaceable trending and other critical operational data.

Benefits of the System

After implementing ICONICS GENESIS32 suite, along with WebHMI, ReportWorX and TrendWorX, Castle Rock Water experienced a 35% decrease in power costs in the first year alone. Because the system was so easy to connect, the operators at Castle Rock Water had everything connected and working as desired within three months of beginning the project. This additional benefit allowed implementors to not

Solutions Highlighted



ReportWorX

Enterprise Reporting, Charting and Analysis Software

TrendWorX

Data Logging, Charting and Reporting Software

WebHMI

Web-Based Real-Time Automation Software

© 2014 ICONICS, Inc. All rights reserved. Specifications are subject to change without notice. AnalytiX and its respective modules are registered trademarks of ICONICS, Inc. GENESIS64, GENESIS32, Hyper Historian, BizViz, MobileHMI, PortalWorX and their respective modules, OPC-To-The-Core, and Visualize Your Enterprise are trademarks of ICONICS, Inc. Other product and company names mentioned herein may be trademarks of their respective owners.